

# ARIA Series

## configuration options and specifications

**\* Prefix**

**AN:** Flat opaque cover

**ANB:** Flat cover with bonded window

**\*\* Suffix**

**No Suffix:** Molded non-metallic hinges and 3 point latching mechanism with quarter turn slot handle

**PL:** Molded non-metallic hinges and stainless steel padlockable twist latches

**Features**

- Enclosures are molded RAL 7035, light grey.
- Bases and covers are made from hot compression molded halogen free, self extinguishing fiberglass reinforced polyester (FRP) that can withstand continuous temperatures up to 158°F (-50°C to 70°C) and momentary exposure to 302°F (150°C).
- Gaskets are made from continuously poured polyurethane foam.
- Windows are made from 1/4" transparent Lexan.
- 4 threaded studs are molded in for attachment of mounting plates and frames.
- All enclosures can be easily modified to customer specifications.

**Applications**

ARIA enclosures feature a contoured body that provides an attractive and contemporary appearance. These enclosures can be used as insulated electrical junction boxes, terminal wiring boxes, instrument housings and electrical control housings in wet, dusty and corrosive environments.

**Standards**

IEC 60529 (IP65) (IP66)	EN 60529 (IP65) (IP66)
IEC 62208	EN 62208
IEC 62262 (IK10)	EN 62262 (IK10)

**Approvals**

UL Listed Types 3, 3R, 3S, 4, 4X, 12 & 13  
 CSA 3, 3R, 3S, 4, 4X, 12 & 13



Opaque Cover Enclosures (AN)	3
Bonded Window Enclosures (ANB)	5
Back Plates	7
Front Plates	8
Accessories	9



**Configurations**

**No Suffix:** Molded non-metallic hinges and 3 point latching mechanism with quarter turn slot handle  
**PL:** Molded non-metallic hinges and stainless steel padlockable twist latches

**Features**

- Enclosures are molded RAL 7035, light grey.
- Bases and covers are made from hot compression molded halogen free, self extinguishing fiberglass reinforced polyester (FRP) that can withstand continuous temperatures up to 158°F (-50°C to 70°C) and momentary exposure to 302°F (150°C).
- Gaskets are made from continuously poured polyurethane foam.
- Windows are made from 1/4" transparent Lexan.
- 4 threaded studs are molded in for attachment of mounting plates and frames.
- All enclosures can be easily modified to customer specifications.

**Applications**

ARIA enclosures feature a contoured body that provides an attractive and contemporary appearance. These enclosures can be used as insulated electrical junction boxes, terminal wiring boxes, instrument housings and electrical control housings in wet, dusty and corrosive environments.

**Standards**

IEC 60529 (IP65) (IP66) EN 60529 (IP65) (IP66)  
 IEC 62208 EN 62208  
 IEC 62262 (IK10) EN 62262 (IK10)

**Approvals**

UL Listed Types 3, 3R, 3S, 4, 4X, 12 & 13  
 CSA 3, 3R, 3S, 4, 4X, 12 & 13



Part Number	Exterior Dimensions	Interior Dimensions	Weight	Back Plate	Front Plate
	H x W x D Inches (mm)	H x W x D Inches (mm)	Lbs (kg)	A: Aluminum S: Steel N: Non-Metallic	A: Aluminum N: Non-Metallic
AN1208 AN1208PL	12.40 x 8.46 x 6.69 (315 x 215 x 170)	10.82 x 6.69 x 6.38 (275 x 170 x 162)	5 (2.27)	ABP1208A ABP1208S ABP1208N	AFP1208A AFP1208N AFPH1208A-KIT AFPH1208N-KIT
AN1612 AN1612PL	16.34 x 12.40 x 6.69 (415 x 315 x 170)	14.83 x 10.63 x 6.38 (375 x 270 x 162)	8 (3.63)	ABP1612A ABP1612S ABP1612N	AFP1612A AFP1612N AFPH1612A-KIT AFPH1612N-KIT
AN2016 AN2016PL	20.28 x 16.34 x 9.06 (515 x 415 x 230)	18.75 x 14.58 x 8.82 (475 x 370 x 224)	14 (6.35)	ABP2016A ABP2016S ABP2016N	AFP2016A AFP2016N AFPH2016A-KIT AFPH2016N-KIT
AN2416 AN2416PL	24.21 x 16.34 x 9.06 (615 x 415 x 230)	22.70 x 14.51 x 8.82 (575 x 370 x 224)	16 (7.26)	ABP2416A ABP2416S ABP2416N	AFP2416A AFP2416N AFPH2416A-KIT AFPH2416N-KIT
AN2820 AN2820PL	28.94 x 21.06 x 10.63 (735 x 535 x 270)	26.57 x 18.50 x 10.39 (675 x 470 x 264)	30 (13.61)	ABP2820A ABP2820S ABP2820N	AFP2820A AFP2820N AFPH2820A-KIT AFPH2820N-KIT
AN3325 AN3325PL	32.87 x 25.00 x 11.81 (835 x 635 x 300)	30.78 x 22.44 x 11.57 (775 x 570 x 294)	36 (16.33)	ABP3325A ABP3325S ABP3325N	AFP3325A AFP3325N AFPH3325A-KIT AFPH3325N-KIT
AN4032 AN4032PL	40.75 x 32.87 x 11.81 (1035 x 835 x 300)	39.16 x 30.28 x 11.57 (975 x 770 x 294)	51 (23.13)	ABP4032A ABP4032S ABP4032N	AFP4032A AFP4032N AFPH4032A-KIT AFPH4032N-KIT

**Configurations**

**No Suffix:** Molded non-metallic hinges and 3 point latching mechanism with quarter turn slot handle  
**PL:** Molded non-metallic hinges and stainless steel padlockable twist latches

**Features**

- Enclosures are molded RAL 7035, light grey.
- Bases and covers are made from hot compression molded halogen free, self extinguishing fiberglass reinforced polyester (FRP) that can withstand continuous temperatures up to 158°F (-50°C to 70°C) and momentary exposure to 302°F (150°C).
- Gaskets are made from continuously poured polyurethane foam.
- Windows are made from 1/4" transparent Lexan.
- 4 threaded studs are molded in for attachment of mounting plates and frames.
- All enclosures can be easily modified to customer specifications.

**Applications**

ARIA enclosures with bonded windows feature a contoured body that provides an attractive and contemporary appearance. These enclosures can be used as insulated electrical junction boxes, terminal wiring boxes, instrument housings and electrical control housings in wet, dusty and corrosive environments where visibility of interior components is essential.

**Standards**

IEC 60529 (IP65) (IP66) EN 60529 (IP65) (IP66)  
 IEC 62208 EN 62208  
 IEC 62262 (IK10) EN 62262 (IK10)

**Approvals**

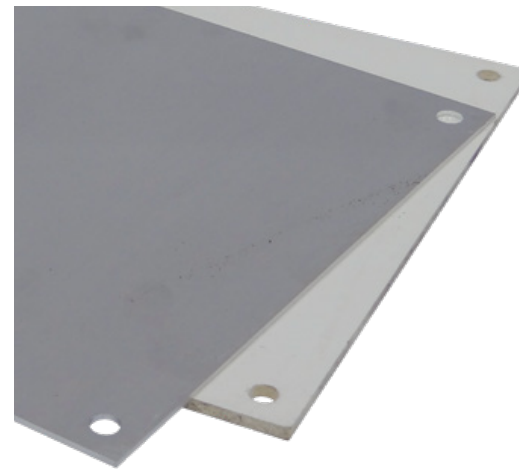
UL Listed Types 3, 3R, 3S, 4, 4X, 12 & 13  
 CSA 3, 3R, 3S, 4, 4X, 12 & 13



Part Number	Exterior Dimensions	Interior Dimensions	Weight	Back Plate	Front Plate
	H x W x D Inches (mm)	H x W x D Inches (mm)		A: Aluminum S: Steel N: Non-Metallic	A: Aluminum N: Non-Metallic
ANB1208 ANB1208PL	12.40 x 8.46 x 6.69 (315 x 215 x 170)	10.82 x 6.69 x 6.38 (275 x 170 x 162)	5 (2.27)	ABP1208A ABP1208S ABP1208N	AFP1208A AFP1208N AFPH1208A-KIT AFPH1208N-KIT
ANB1612 ANB1612PL	16.34 x 12.40 x 6.69 (415 x 315 x 170)	14.83 x 10.63 x 6.38 (375 x 270 x 162)	8 (3.63)	ABP1612A ABP1612S ABP1612N	AFP1612A AFP1612N AFPH1612A-KIT AFPH1612N-KIT
ANB2016 ANB2016PL	20.28 x 16.34 x 9.06 (515 x 415 x 230)	18.75 x 14.58 x 8.82 (475 x 370 x 224)	14 (6.35)	ABP2016A ABP2016S ABP2016N	AFP2016A AFP2016N AFPH2016A-KIT AFPH2016N-KIT
ANB2416 ANB2416PL	24.21 x 16.34 x 9.06 (615 x 415 x 230)	22.70 x 14.51 x 8.82 (575 x 370 x 224)	16 (7.26)	ABP2416A ABP2416S ABP2416N	AFP2416A AFP2416N AFPH2416A-KIT AFPH2416N-KIT
ANB2820 ANB2820PL	28.94 x 21.06 x 10.63 (735 x 535 x 270)	26.57 x 18.50 x 10.39 (675 x 470 x 264)	30 (13.61)	ABP2820A ABP2820S ABP2820N	AFP2820A AFP2820N AFPH2820A-KIT AFPH2820N-KIT
ANB3325 ANB3325PL	32.87 x 25.00 x 11.81 (835 x 635 x 300)	30.78 x 22.44 x 11.57 (775 x 570 x 294)	36 (16.33)	ABP3325A ABP3325S ABP3325N	AFP3325A AFP3325N AFPH3325A-KIT AFPH3325N-KIT
ANB4032 ANB4032PL	40.75 x 32.87 x 11.81 (1035 x 835 x 300)	39.16 x 30.28 x 11.57 (975 x 770 x 294)	51 (23.13)	ABP4032A ABP4032S ABP4032N	AFP4032A AFP4032N AFPH4032A-KIT AFPH4032N-KIT

### Back Plates

Part Number	Dimensions	Material	Thickness	Weight	Enclosure
	H x W Inches (mm)		Inches (mm)	Lbs (kg)	
ABP1208A ABP1208S ABP1208N	9.84 x 5.91 (250 x 150)	Aluminum Steel Non-Metallic	.08 (2) .06 (1.5) .1875 (4.8)	0.71 (0.32) 1.23 (0.56) 0.57 (0.26)	AN1208
ABP1612A ABP1612S ABP1612N	13.78 x 9.84 (350 x 250)	Aluminum Steel Non-Metallic	.08 (2) .06 (1.5) .1875 (4.8)	1.34 (0.61) 2.50 (1.13) 1.15 (0.52)	AN1612
ABP2016A ABP2016S ABP2016N	17.72 x 13.78 (450 x 350)	Aluminum Steel Non-Metallic	.08 (2) .06 (1.5) .1875 (4.8)	2.24 (1.02) 4.16 (1.89) 1.92 (.87)	AN2016
ABP2416A ABP2416S ABP2416N	21.65 x 13.78 (550 x 350)	Aluminum Steel Non-Metallic	.08 (2) .06 (1.5) .1875 (4.8)	2.69 (1.22) 4.99 (2.26) 2.30 (1.04)	AN2416
ABP2820A ABP2820S ABP2820N	25.59 x 17.72 (650 x 450)	Aluminum Steel Non-Metallic	.08 (2) .06 (1.5) .1875 (4.8)	3.92 (1.78) 7.28 (3.30) 3.36 (1.52)	AN2820
ABP3325A ABP3325S ABP3325N	29.53 x 21.65 (750 x 550)	Aluminum Steel Non-Metallic	.08 (2) .06 (1.5) .1875 (4.8)	5.78 (2.62) 10.73 (4.87) 4.95 (2.25)	AN3325
ABP4032A ABP4032S ABP4032N	37.40 x 29.53 (950 x 750)	Aluminum Steel Non-Metallic	.08 (2) .06 (1.5) .1875 (4.8)	8.96 (4.06) 16.64 (7.55) 7.68 (3.48)	AN4032



### Front Plates

Part Number	Dimensions	Material	Thickness	Weight	Style	Enclosure
	H x W Inches (mm)		Inches (mm)	Lbs (kg)		
AFP1208A AFP1208N AFPH1208A-KIT AFPH1208N-KIT	10.98 x 6.38 (279 x 162)	Aluminum Non-Metallic	.08 (2) .1875 (4.8)	0.71 (0.32) 0.57 (0.26)	Dead Front Dead Front Hinged Kit Hinged Kit	AN1208
AFP1612A AFP1612N AFPH1612A-KIT AFPH1612N-KIT	14.92 x 10.32 (379 x 262)	Aluminum Non-Metallic	.08 (2) .1875 (4.8)	1.34 (0.61) 1.15 (0.52)	Dead Front Dead Front Hinged Kit Hinged Kit	AN1612
AFP2016A AFP2016N AFPH2016A-KIT AFPH2016N-KIT	18.86 x 14.25 (479 x 362)	Aluminum Non-Metallic	.08 (2) .1875 (4.8)	2.24 (1.02) 1.92 (.87)	Dead Front Dead Front Hinged Kit Hinged Kit	AN2016
AFP2416A AFP2416N AFPH2416A-KIT AFPH2416N-KIT	22.80 x 14.25 (579 x 362)	Aluminum Non-Metallic	.08 (2) .1875 (4.8)	2.69 (1.22) 2.30 (1.04)	Dead Front Dead Front Hinged Kit Hinged Kit	AN2416
AFP2820A AFP2820N AFPH2820A-KIT AFPH2820N-KIT	27.17 x 18.19 (690 x 462)	Aluminum Non-Metallic	.08 (2) .1875 (4.8)	3.92 (1.78) 3.36 (1.52)	Dead Front Dead Front Hinged Kit Hinged Kit	AN2820
AFP3325A AFP3325N AFPH3325A-KIT AFPH3325N-KIT	31.10 x 22.13 (790 x 562)	Aluminum Non-Metallic	.08 (2) .1875 (4.8)	5.78 (2.62) 4.95 (2.25)	Dead Front Dead Front Hinged Kit Hinged Kit	AN3325
AFP4032A AFP4032N AFPH4032A-KIT AFPH4032N-KIT	38.98 x 30.00 (990 x 762)	Aluminum Non-Metallic	.08 (2) .1875 (4.8)	8.96 (4.06) 7.68 (3.48)	Dead Front Dead Front Hinged Kit Hinged Kit	AN4032



## General Accessories

	AN-NMF Non-Metallic Mounting Feet	Material: Polyamide Package: Set of 4 pieces Direct mount to back of enclosures.
	AN-MFSS Stainless Steel Mounting Feet	Material: 304 Stainless Steel Package: Set of 4 pieces Direct mount to back of enclosures.
	MEDVRAL7035 Air Vents	Material: Polyamide Package: Set of 2 pieces 2 air vents must be mounted per enclosure to ensure sufficient air circulation and limit condensate; ideal installation in upper and lower sections of enclosure. Complete with template and screws. UL Listed if factory installed.
	SEDV Small Drain Vents	Material: Polyamide Package: Set of 2 pieces 2 air vents must be mounted per enclosure to ensure sufficient air circulation and limit condensate.
	RDV Ventilators	Material: Polyamide Package: Set of 2 pieces Mounting hole diameter: 1.4"
	PCP Pressure Compensation Plugs	Material: Polyamide Package: Set of 2 pieces Mounting hole diameter: 1.5"
	ABP-DA Back plate depth adjusters	Material: Stainless steel Package: Set of 4 pieces
	A-HKL Small Quarter Turn Key lock Handle	Small quarter turn handle with key lock installed. Includes set of 2 keys. Note: Key lock handles are recommended for factory installation; alternate lock inserts available upon request.
	A-HNMKL Large Lift / Turn Key lock Handle	Large lift / turn handle with key lock installed. Includes set of 2 keys. Note: Key lock handles are recommended for factory installation; alternate lock inserts available upon request.
	KLC-SP Standard Cylinder Key lock	Half cylinder profile key lock. Includes set of 2 keys (V2432E). Included with A-HKL and A-HNMKL.
	KLC-SQ8 Square Bit Key lock	.31" (8mm) square bit key lock. Includes 1 key. Optional with A-HKL and A-HNMKL.

## General Accessories

	KLC-T8 Triangle Bit Key lock	.31" (8mm) triangle bit key lock. Includes 1 key. Optional with A-HKL and A-HNMKL.
	KLC-T11 Triangle Bit Key lock	.43" (11mm) triangle bit key lock. Includes 1 key. Optional with A-HKL and A-HNMKL.
	KLC-DB3 Double Bit Key lock	.12" (3mm) double bit key lock. Includes 1 key. Optional with A-HKL and A-HNMKL.
	A-HN Small Quarter Turn Handle	Small standard quarter turn handle. Note: Quarter turn handles are recommended for factory installation.
	A-HNM Large Lift / Turn Handle	Large standard lift / turn handle. Note: Lift / turn handles are recommended for factory installation.
	A-HNMPL Large Lift / Turn Padlockable Handle	Large standard lift / turn handle with padlock capability. Note: Lift / turn handles are recommended for factory installation.
	ARPL-KIT Padlock Latch Kit	Material: 304SS Package: Set of 2 pieces
	AFPH Front Plate Hinge Supports	Material: Aluminum Package: Set of 2 pieces
	1021.020 Document Pocket	Dimensions inches (H x W x D): 6.7 x 5.5 x .4 Dimensions mm (H x W x D): 170 x 140 x 10 Self adhesive
	41270.070 Carrying Handle	Dimensions inches (L x W x H): 7.9 x 1.9 x 2 Dimensions mm (L x W x H): 200 x 47 x 50 Material: Vyncolite Includes reinforcement plate and screws